

**SOLIBRA
LOGISTICS**

PROJECT CARGO

CONSIDER IT DONE!

WHO WE ARE



SOLIBRA LOGISTICS established in 2006 as a Logistics Company in Istanbul . We are a leading Freight Forwarder in Turkey, highly regarded by its clients, providing safe and reliable transportation services to a diverse group of customers. With 40 years of experience in Customs brokerage and Freight Forwarding we are here to serve the ever growing trade to the World.

Our Goal is to provide excellence in any service we offer, by employing professionals who have knowledge in the area they cover and many years experience in shipping.

OVER THE LAST YEARS THE COMPANY HAS STEADILY GROWN TO ONE OF THE LEADING FREIGHT FORWARDER AND LOGISTICS PROVIDER IN TURKEY.

WE ARE OFFERING A
WIDE RANGE OF
SERVICES:

- FCL & LCL
Transportation
- Special container -
Reefer, Open Top,
Flat Rack, Tank, Flexi -
transportation
- Door - to - door
container transport
- Rail - Sea - Land
combined services
- Ro-Ro
Transportation -
Heavy Duty
Machinery, Heavy
Equipment Shipment



OUR SERVICES

PROJECT CARGO

Project cargo requires special modes of transportation, uniquely designed to accommodate safety requirements, and provide operation efficiency. We work with you to ensure that your project cargo gets to

Moving oversized and heavy project-related items often requires careful planning and special modes of transport. At Solibra Logistics, our project cargo specialists work with you from start to finish to ensure your cargo is moved safely and efficiently from origin to destination.

When you work with us, you get the benefit of our experience and expertise with shipping project cargo, from consulting to planning through to execution and delivery.

Whether your cargo is oversize or extremely heavy, you can count on us. And, if your equipment needs to be disassembled and shipped to another site at the end of a project, we can handle that too.



In October 2019 we have managed Ro - Ro cargo from Gebze to Gemlik Port in Turkey.

We secured transportation of Track Stabilization.

Cargo's dimensions:

17.70 M lenght

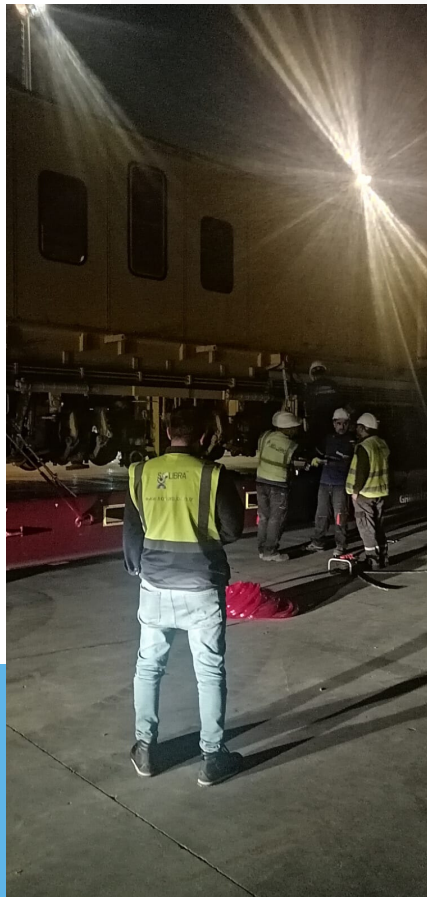
3 M Width

4.20 M High

61 000 KGS Weight

Cargo was delivered to pick up point at Gebze by railway. We have lifted the cargo, did stuffing on the dedicated truck and managed lashing and securing.

We surveyed the cargo all road to Gemlik Port by dedicated cars.



GEBZE - GEMLIK PROJECT CARGO

CONTACT DETAILS

WE ARE HERE TO PROVIDE
YOU BEST FREIGHT COST
ALONG WITH A SUPER
EFFECTIVE CUSTOMER
SERVICE.

HEAD OFFICE

Solibra Lojistik Hizmetleri A.Ş.

Head Office

Icerenkoy Mah. Ali Nihat Tarlan
Cad.

Suleyman Baskan Ismerkezi No:82
Kat:7

Ofis:11 Atasehir 34752 Istanbul,
Turkiye

Tel : 0090 (216) 416 30 62

Fax: 0090 (216) 416 30 67

overseas@solibra.com.tr

Istanbul Airport

Ataturk Hava Limani C Kargo Terminali

Acentalar Binası Asma Kat No.38

Yesilkoy Istanbul, Turkiye

TEL - 0090 (212) 414 17 44

selcuk@solibra.com.tr

Gebze Branch

Kazım Karabekir Mah.

Istasyon Cad. No:519/B

Darica, Gebze,Kocaeli,Turkiye

Tel : 0090 (262) 655 16 65

gebze@solibra.com.tr

Antalya Branch

Guzeloba Mah. Havaalanı Cad.

A Blok 102-A Muratpasa

ANTALYA

TEL - 0090 (850) 433 30 62

antalya@solibra.com.tr

Gemlik Branch

Hisar Tepe Mah. Akca Cad. No:1/9

Gemlik Bursa, Turkiye

TEL - 0090 (224) 514 13 78-79

FAX - 0090 (224) 514 13 76

gemlik@solibra.com.tr

